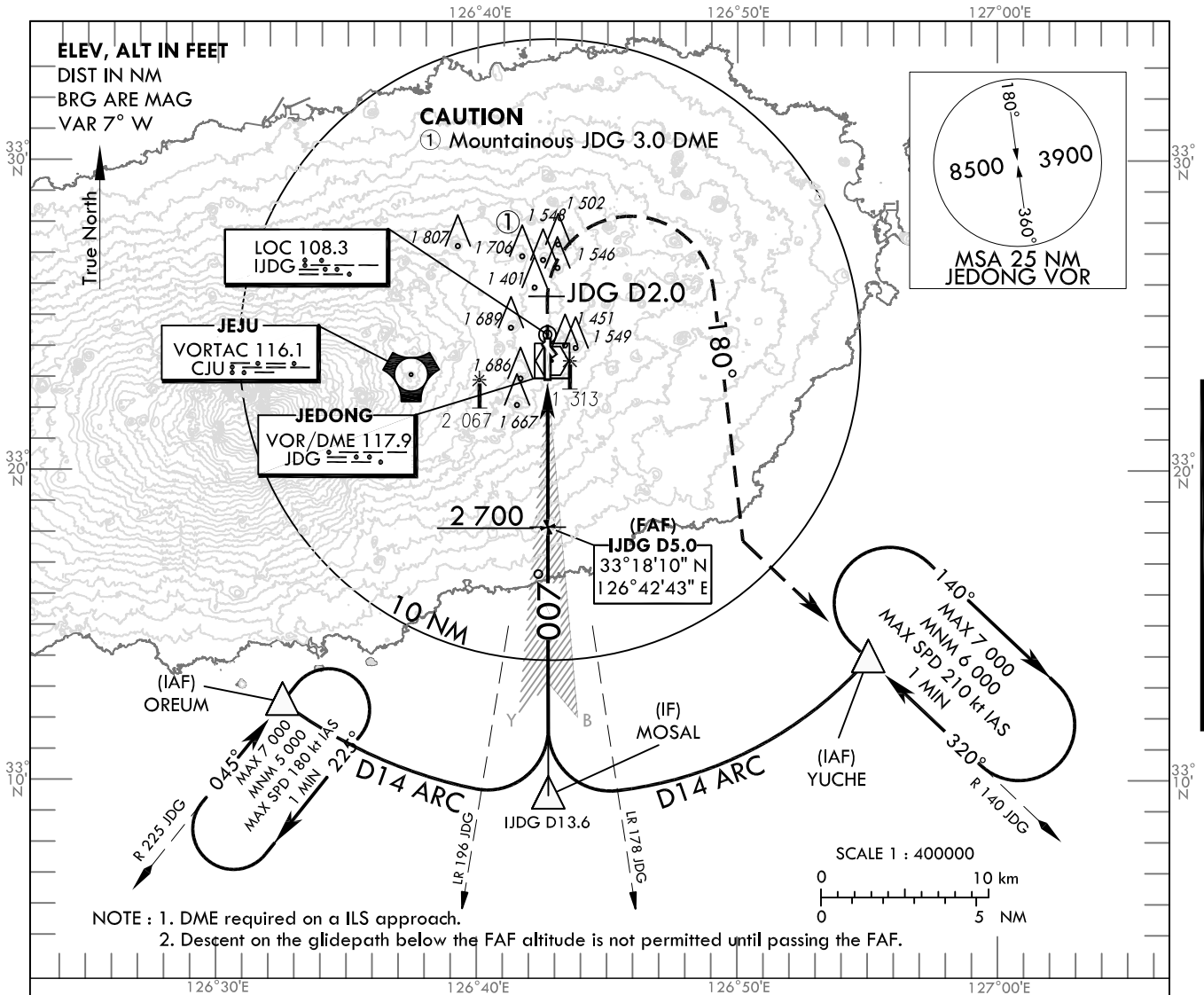


**INSTRUMENT  
APPROACH  
CHART - ICAO**

**AERODROME ELEV 1 174 ft**  
HEIGHTS RELATED TO  
THR RWY 01 - ELEV 1 102 ft

JEJU APP 121.2  
124.05  
JEONGSEOK TWR 124.35

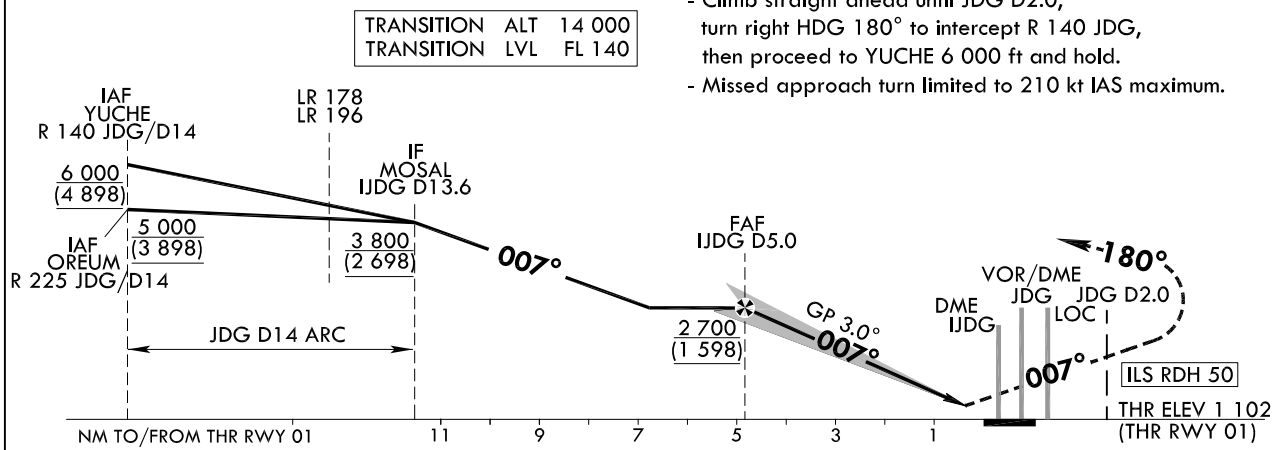
**JEJU/Jeongseok(RKPD)**  
**ILS RWY 01**



NOTE : 1. DME required on a ILS approach.  
2. Descent on the glidepath below the FAF altitude is not permitted until passing the FAF.

**MISSED APPROACH**

- Climb straight ahead until JDG D2.0, turn right HDG 180° to intercept R 140 JDG, then proceed to YUCHE 6 000 ft and hold.
- Missed approach turn limited to 210 kt IAS maximum.



CATEGORY		DA(H)	A	B	C	D							
CAT-I (4.0%)	FULL	1 302(200)	RVR 750 m, VIS 800 m					knots	60	90	120	150	180
	ALS INOP		1 200 m						V/V fpm	323	485	646	808
CAT-I (2.5%)	FULL	1 482(380)	1 600 m					* Circling Not authorized.					
	ALS INOP		2 000 m										

Change : Amended ILS plan view symbol.

AERONAUTICAL DATA TABULATION

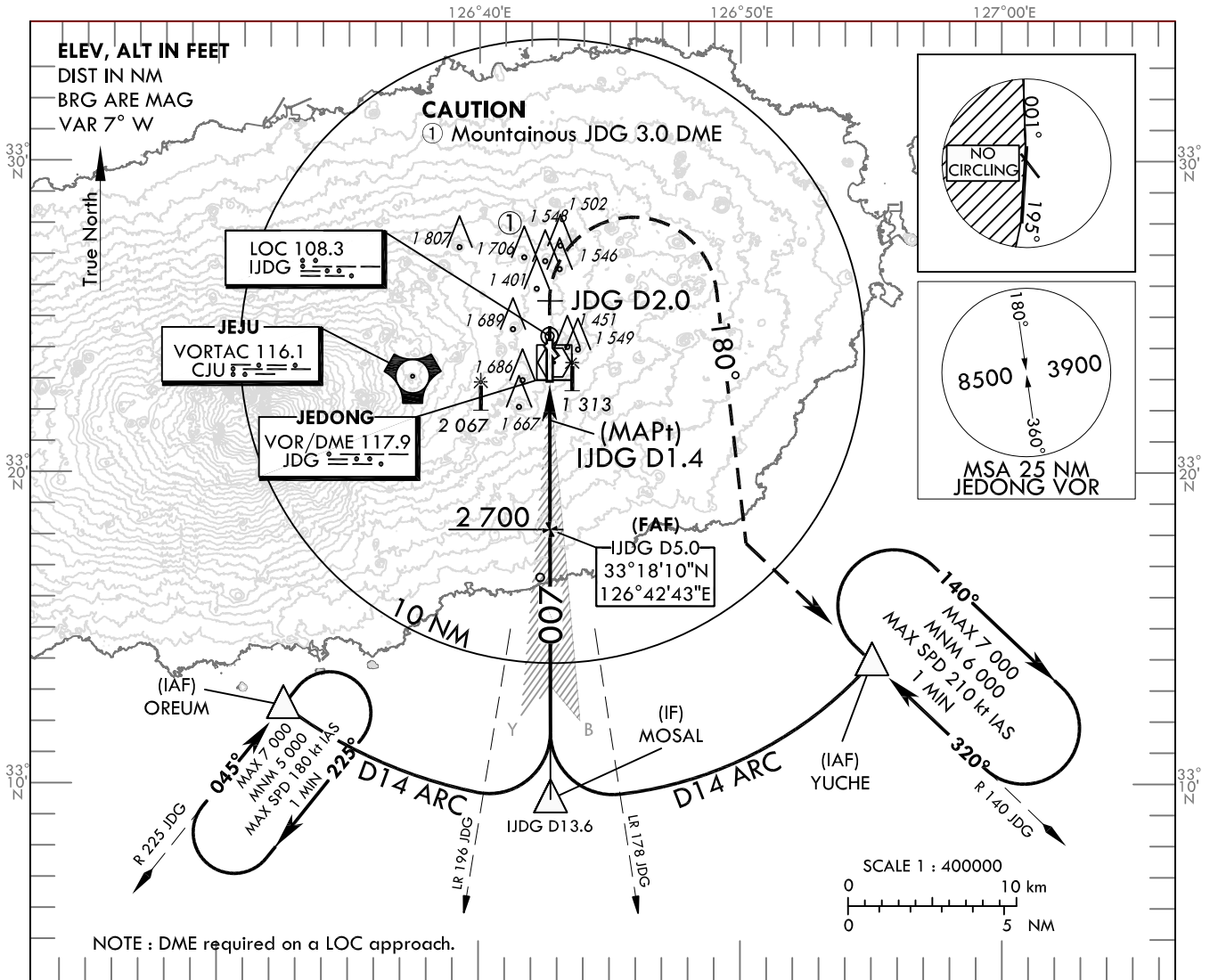
ILS approach to RWY 01 from YUCHE, OREUM		
Fix/point		Coordinates
YUCHE(IAF)	R 140 JDG/14.00 NM	33°13'55.3"N 126°55'02.3"E
OREUM(IAF)	R 225 JDG/14.00 NM	33°12'29.9"N 126°32'33.2"E
MOSAL(IF)	BRG 186.54°/13.60 NM IJDG	33°09'30.3"N 126°42'46.3"E
D5.0 IJDG (FAF)	BRG 186.54°/4.95 NM IJDG	33°18'10.0"N 126°42'43.3"E
THR RWY01		33°22'58.36"N 126°42'41.71"E
IJDG LOC		33°24'22.7"N 126°42'41.2"E
IJDG DME		33°23'07.8"N 126°42'46.5"E
D2.0 JDG(MATF)	2.00 NM JDG	33°25'31.7"N 126°42'40.8"E
YUCHE(MAHF)	R 140 JDG/14.00 NM	33°13'55.3"N 126°55'02.3"E

**INSTRUMENT  
APPROACH  
CHART - ICAO**

**AERODROME ELEV 1 174 ft**  
HEIGHTS RELATED TO  
THR RWY 01 - ELEV 1 102 ft

JEJU APP 121.2  
124.05  
JEONGSEOK TWR 124.35

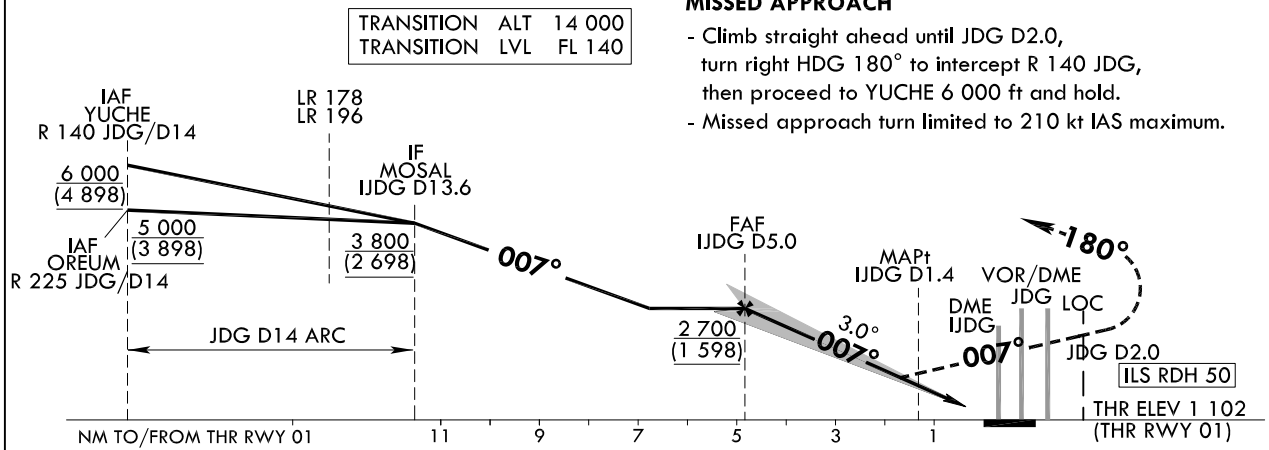
**JEJU/Jeongseok(RKPD)  
LOC RWY 01**



NOTE : DME required on a LOC approach.

**MISSED APPROACH**

- Climb straight ahead until JDG D2.0, turn right HDG 180° to intercept R 140 JDG, then proceed to YUCHE 6 000 ft and hold.
- Missed approach turn limited to 210 kt maximum.



CATEGORY		MDA(H)	A	B	C	D
LOC (4.0%)	FULL	1 580		2 100 m		
	ALS INOP	(478)		2 500 m		
LOC (2.5%)	FULL	1 720		2 900 m		
	ALS INOP	(618)		3 300 m		
		MAX IAS	100	135	180	205
*Circling			1 900(726)	1 920(746)	2 020(846)	
			3 400 m	3 500 m	3 800 m	4 600 m

knots	60	90	120	150	180
Rate of descent (FAF-THR) V/V fpm	315	473	630	788	945

\* Timing Not authorized for defining MAPt.  
\* Circling Not authorized west of RWY 01-19.

Change : Amended ILS plan view symbol.

AERONAUTICAL DATA TABULATION

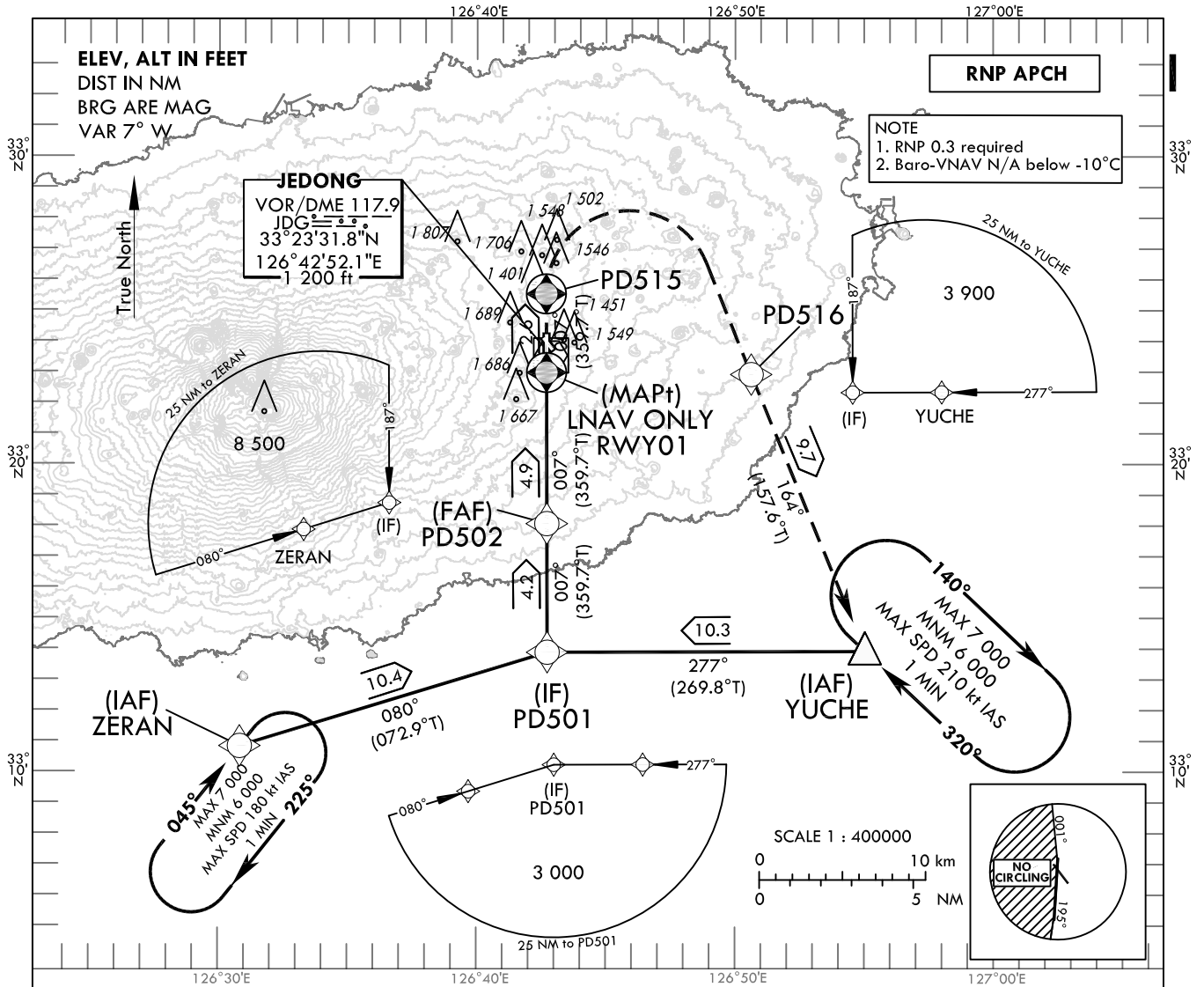
LOC approach to RWY 01 from YUCHE, OREUM		
Fix/point		Coordinates
YUCHE(IAF)	R 140 JDG/14.00 NM	33°13'55.3"N 126°55'02.3"E
OREUM(IAF)	R 225 JDG/14.00 NM	33°12'29.9"N 126°32'33.2"E
MOSAL(IF)	BRG 186.54°/13.60 NM IJDG	33°09'30.3"N 126°42'46.3"E
D5.0 IJDG (FAF)	BRG 186.54°/4.95 NM IJDG	33°18'10.0"N 126°42'43.3"E
D1.4 IJDG (MAPt)	BRG 186.54°/1.40 NM IJDG	33°21'43.7"N 126°42'42.1"E
THR RWY01		33°22'58.36"N 126°42'41.71"E
IJDG LOC		33°24'22.7"N 126°42'41.2"E
IJDG DME		33°23'07.8"N 126°42'46.5"E
D2.0 JDG(MATF)	2.00 NM JDG	33°25'31.7"N 126°42'40.8"E
YUCHE(MAHF)	R 140 JDG/14.00 NM	33°13'55.3"N 126°55'02.3"E

**INSTRUMENT  
APPROACH  
CHART - ICAO**

**AERODROME ELEV 1 174 ft**  
HEIGHTS RELATED TO  
THR RWY 01 - ELEV 1 102 ft

JEJU APP 121.2  
124.05  
JEONGSEOK TWR 124.35

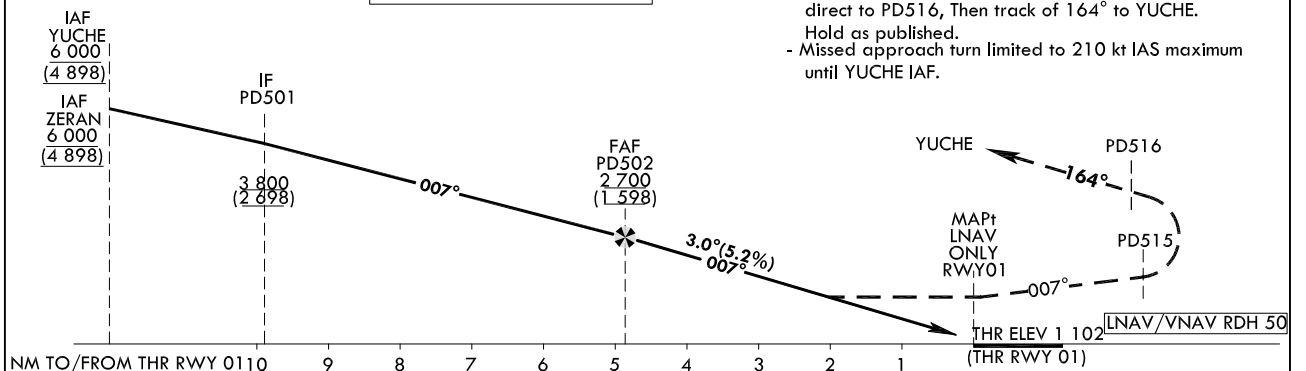
**JEJU/Jeongseok(RKPD)  
RNP RWY 01**



TRANSITION ALT 14 000  
TRANSITION LVL FL 140

**MISSED APPROACH**

- Climb to 6 000 ft on track of 007° to PD515, Right turn direct to PD516, Then track of 164° to YUCHE. Hold as published.
- Missed approach turn limited to 210 kt IAS maximum until YUCHE IAF.



CATEGORY		A	B	C	D							
LNAV/VNAV	FULL	DA(H)				2 900 m						
	ALS INOP	1 720 (618)				3 400 m						
LNAV	FULL	MDA(H)				3 600 m						
	ALS INOP	1 830 (728)				4 000 m						
		100	135	180	205	Rate of descent	V/V fpm	318	478	637	796	955
* Circling		1 900 (726)	1 920 (746)	2 020 (846)								
		4 000 m			4 600 m							

\* Timing not authorized for defining MAPt.  
\* Circling not authorized west of RWY 01-19.

Change : Amended procedure name(RNAV(GNSS)) → RNP).

AERONAUTICAL DATA TABULATION

Instrument Approach Procedure Coding Tables

RNP RWY01 - via YUCHE to PD501 (IF)

Serial Number	Path Descriptor	Waypoint Identifier	Fly-over	Course/Track °M(°T)	Distance (NM)	Turn direction	Altitude (ft)	Speed (kt)	Coordinates	VPA/TCH	Navigation specification	Remarks
001	IF	YUCHE	-	-	-	-	+6 000	-	33°13'55.3"N 126°55'02.3"E	-	RNP APCH	IAF
002	TF	PD501	-	277(269.8)	10.3	-	+3 800	-	33°13'53.0"N 126°42'44.8"E	-	RNP APCH	IF

RNP RWY01 - via ZERAN to PD501 (IF)

Serial Number	Path Descriptor	Waypoint Identifier	Fly-over	Course/Track °M(°T)	Distance (NM)	Turn direction	Altitude (ft)	Speed (kt)	Coordinates	VPA/TCH	Navigation specification	Remarks
001	IF	ZERAN	-	-	-	-	+6 000	-	33°10'49.1"N 126°30'51.5"E	-	RNP APCH	IAF
002	TF	PD501	-	080(072.9)	10.4	-	+3 800	-	33°13'53.0"N 126°42'44.8"E	-	RNP APCH	IF

RNP RWY01 - via PD501 (IF) to MAHF

Serial Number	Path Descriptor	Waypoint Identifier	Fly-over	Course/Track °M(°T)	Distance (NM)	Turn direction	Altitude (ft)	Speed (kt)	Coordinates	VPA/TCH	Navigation specification	Remarks
002	TF	PD501	-	-	-	-	+3 800	-	33°13'53.0"N 126°42'44.8"E	-	RNP APCH	IF
003	TF	PD502	-	007(359.7)	4.2	-	+2 700	-	33°18'06.1"N 126°42'43.4"E	-	RNP APCH	FAF
004	TF	RWY01	Y	007(359.7)	4.9	-	+1 830	-	33°22'58.4"N 126°42'41.7"E	3.00/50	RNP APCH	MAPt
005	TF	PD515	Y	007(359.7)	2.6	-	-	-210	33°25'31.7"N 126°42'40.8"E	-	RNP APCH	-
006	DF	PD516	-	-	-	R	-	-210	33°22'55.2"N 126°50'37.5"E	-	RNP APCH	-
007	TF	YUCHE	Y	164(157.6)	9.7	-	-	-210	33°13'55.3"N 126°55'02.3"E	-	RNP APCH	-
008	HM	YUCHE	Y	320(313.3)	-	R	-7 000 +6 000	-210	33°13'55.3"N 126°55'02.3"E	-	RNP APCH	Orbround time 1 min

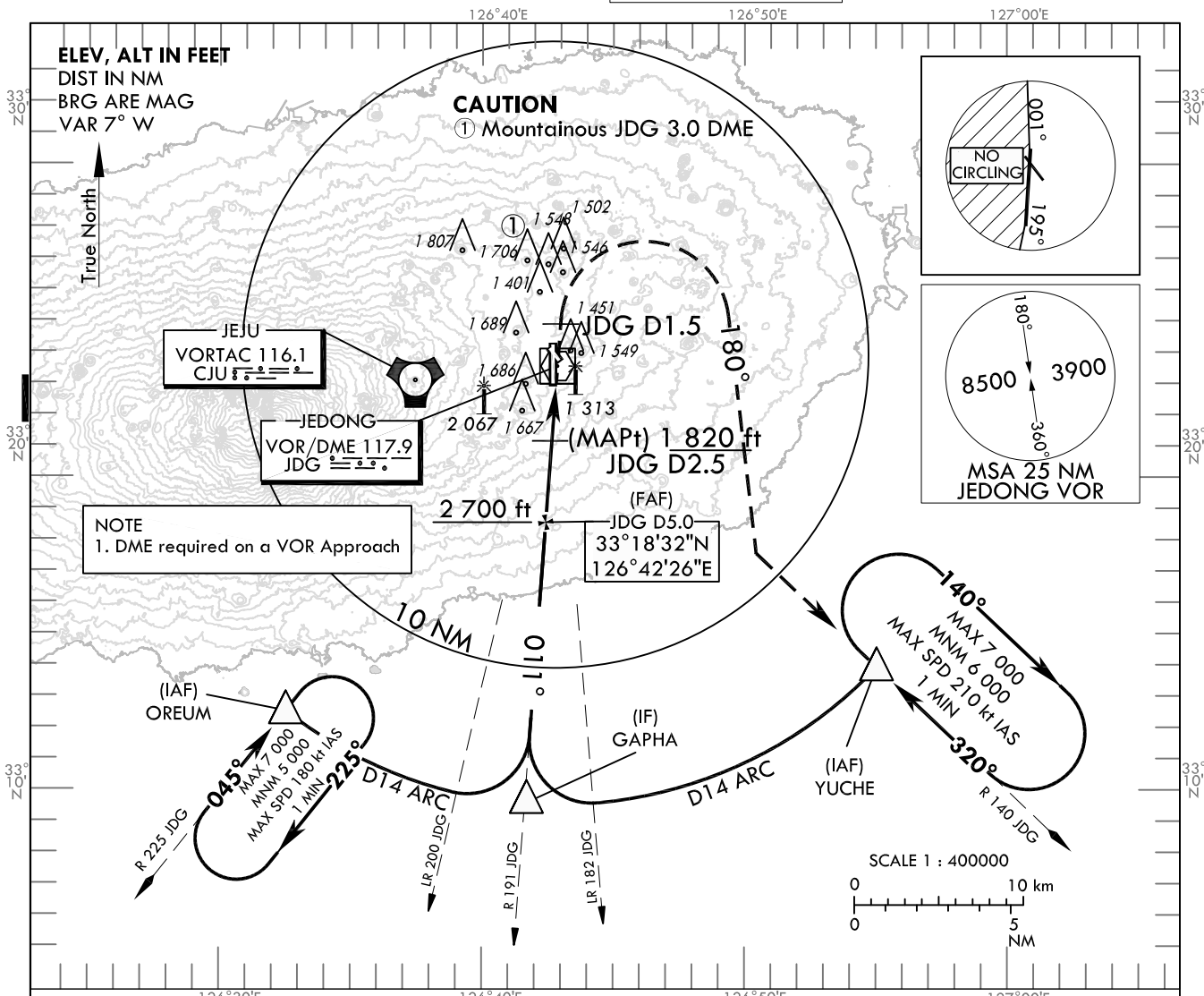
Change : Amended procedure name(RNAV(GNSS) → RNP).

**INSTRUMENT  
APPROACH  
CHART - ICAO**

**AERODROME ELEV 1 174 ft**  
HEIGHTS RELATED TO  
THR RWY 01 - ELEV 1 102 ft

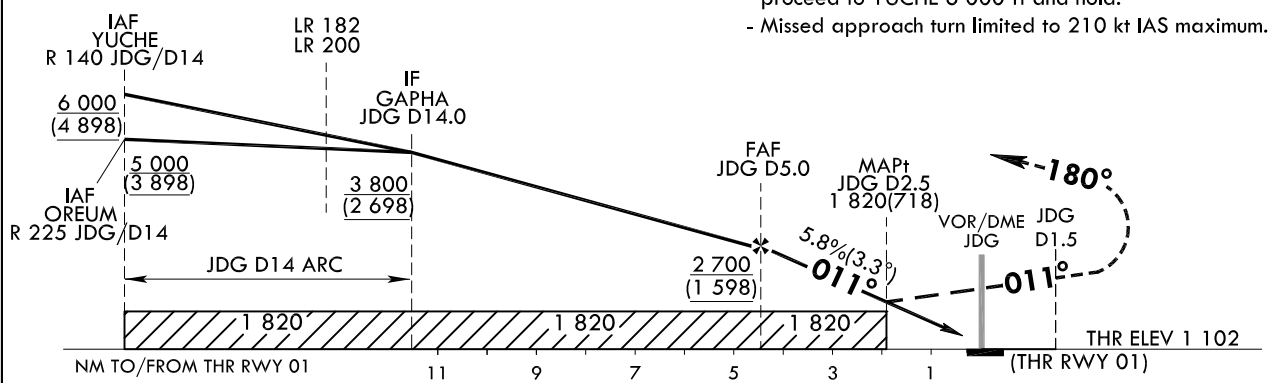
JEJU APP 121.2  
124.05  
JEONGSEOK TWR 124.35

**JEJU/Jeongseok(RKPD)  
VOR RWY 01**



TRANSITION ALT 14 000  
TRANSITION LVL FL 140

**MISSED APPROACH**  
- Climb straight ahead until JDG D1.5, turn right HDG 180 to intercept R 140 JDG, then proceed to YUCHE 6 000 ft and hold.  
- Missed approach turn limited to 210 kt IAS maximum.



CATEGORY		MDA(MDH)	A	B	C	D							
VOR	FULL	1 820	3 200 m										
	ALS IONP	(718)	3 600 m										
MAX IAS			100	135	180	205	Rate of descent (FAF-THR)	V/V fpm	352	528	704	880	1056
*Circling			1 900(726)	1 920(746)	2 020(846)		* Timing not authorized for defining MAPt. * Circling not authorized west of RWY 01-19.						
			3 600 m		3 800 m	4 600 m							

Change : Establishment of wind turbine.

JEJU/Jeongseok(RKPD)  
VOR RWY 01

AERONAUTICAL DATA TABULATION

VOR approach to RWY 01 from YUCHE, OREUM		
Fix/point		Coordinates
YUCHE(IAF)	R 140 JDG/14.00 NM	33°13'55.3"N 126°55'02.3"E
OREUM(IAF)	R 225 JDG/14.00 NM	33°12'29.9"N 126°32'33.2"E
GAPHA(IF)	BRG 191.00°/14.00 NM JDG	33°09'32.5"N 126°41'39.1"E
D5.0 JDG (FAF)	BRG 191.00°/5.00 NM JDG	33°18'32.1"N 126°42'26.0"E
D2.5 JDG (MAPt)	BRG 191.00°/2.50 NM JDG	33°21'02.0"N 126°42'39.0"E
THR RWY01	Final approach descent angle 3.30°	33°22'58.36"N 126°42'41.71"E
JDG VOR/DME		33°23'31.8"N 126°42'52.1"E
D1.5 JDG (MATF)	1.50 NM JDG	33°25'01.8"N 126°42'59.9"E
YUCHE(MAHF)	R 140 JDG/14.00 NM	33°13'55.3"N 126°55'02.3"E